

# South Population Health and Prevention Funding

## Introduction

The South Local Care Partnership has received £184,000 in funding for health inequality work. This funding is for 23/24 and priority focus will be on short term funding to be spent with the current financial year, which supports test of change/transformation to address inequalities and the project can commence quickly.

**Funding is currently available for the 2023/24 financial year. All monies must be claimed by recipients by 31 March 2024. A simple process has been developed to support your application. If you have any queries regarding the process please send an email entitled “South Population Health and Prevention Funding” to [d-icb.contracting@nhs.net](mailto:d-icb.contracting@nhs.net)**

## Purpose of the funding

The South and West Locality Commissioning Team, NHS Devon is administering the South Population Health and Prevention fund on behalf of the South Local Care Partnership via the South Population Health Steering Group. The fund is to support partners in the locality and LCP with capacity and capability to understand the barriers and challenges people experience. Within the South locality we want to improve the health and wellbeing of the people who are marginalised or who experience the worst health inequalities. Funding available for 2023/24 financial year aims to ensure **the following principles and practices should underpin use of the funding.**

- Utilise **approaches that generate learning, connection and value** across systems, for example, Values Based Approaches, Human Centred Design, Human Learning Systems
- Deploying Population Health insights into the key issues facing people and communities in the locality alongside the **knowledge, skills, experiences and ideas of people and communities** who are often best placed to generate strength-based solutions to the issues they face.
- Explore opportunities for **transformation and sustainability, building capability in communities**, drawing on assets and strengths to avoid funding cliff edges for projects that provide short term fixes to systemic challenges.
- Growing **capability for learning and adaptation**. Investments and proposals are informed by evidence where it is available and learning from what works well
- Think ‘Anchor’ and the social economy – **explore how investment can add social value and community wealth through reinvestment, reciprocity, shared resourcing** etc.
- Addressing Priority areas of Primary Care Networks, Local Care Partnership, NHS Devon, Joint Forward Plan and national imperatives; for example
  - High Intensity User
  - CORE20+5 – inc. High Impact Interventions

[NHS England » Core20PLUS5 \(adults\) – an approach to reducing healthcare inequalities](#)

[NHS England » Core20PLUS5 – An approach to reducing health inequalities for children and young people](#)

- Pathways recommendations into Homelessness and Health
- People led Change

### Eligibility criteria

- **Applications are encouraged from community groups, Voluntary, Community, Social Enterprise and Independent sector organisations and public organisations.**
- **Your group must be a formally constituted group, with indemnity insurance in place and have a bank account. Funding cannot be transferred to personal bank accounts.**
- **Groups who are not formally constituted and who do not have an organisational bank account may apply if**
  - **The group wishing to submit an application has been in communication with their local Community Voluntary Sector infrastructure organisation e.g. Teignbridge CVS / Torbay Communities (formerly Torbay Community Development Trust)**
  - **The CVS has agreed to hold funds on behalf of the group if the application is successful**
- **The project and its delivery must be within the South Local Care Partnership footprint. Please use the map provided to confirm your project is within the South LCP footprint.**
- **Funding can be applied for as full cost or match funding. In cases where match funding is being requested the remaining total cost for project delivery must already have been secured. This includes projects which are directly delivered by a group / organisation. In this situation project delivery can continue into 2024/25, however this fund should be utilised in the 2023/24 financial year.**
- **Funding can be applied for as match funding where the remaining total cost for project delivery has already been secured. This also includes where funding is required to support programme delivery of a service which requires commissioning. The commissioning / procurement of the service must be complete prior to 31 March 2024. The funding is to be used for service / project delivery and will not contribute to commissioning or procurement activity.**
- **Projects must meet the aims of the Population Health and Prevention funding and be able to evidence a clear inequality is being addressed.**

### Process for applying

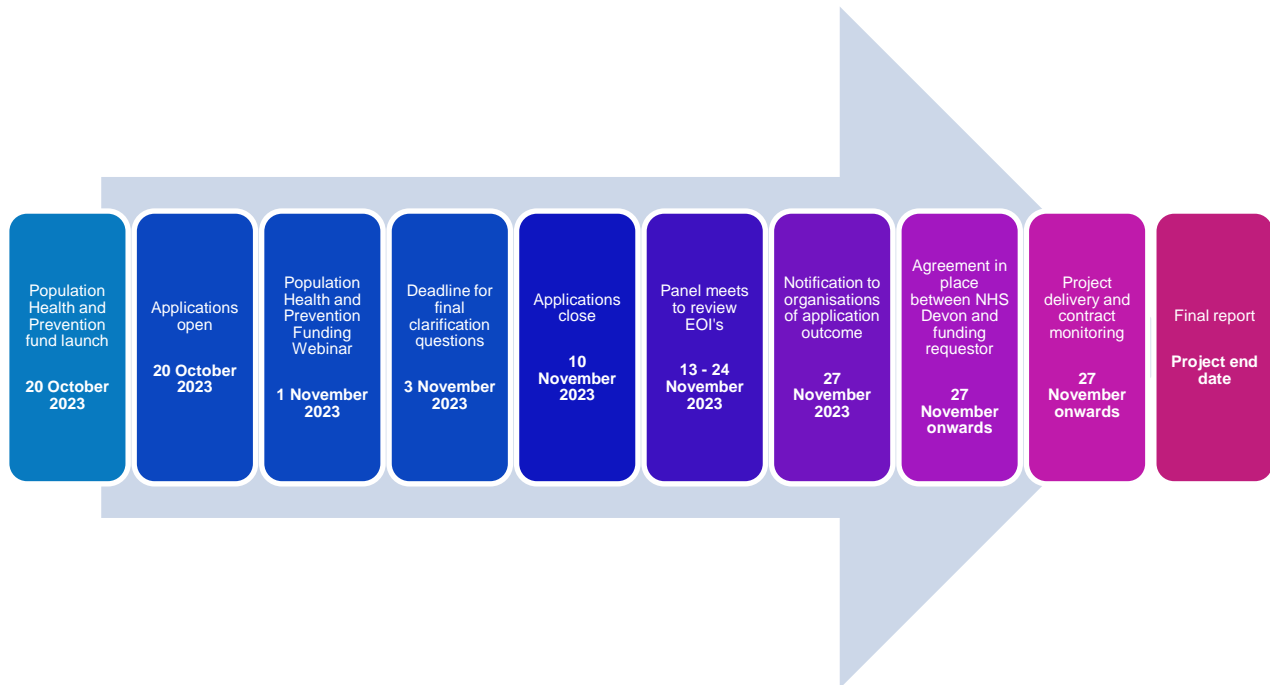
- To apply for funding please complete an application using the template provided. A copy of the application can be requested via email from [d-icb.contracting@nhs.net](mailto:d-icb.contracting@nhs.net).

All applicants are required to complete the following information. All questions must be answered. Please include:

- **Organisation / group name**

- **Geographic area to be covered within project delivery** (*projects will only be considered if delivery is within the South Local Care Partnership footprint*)
  - **What you want to do and why** (*a description of your project*)
  - **How your application meets our principles and process** (*which aim(s) of the fund it seeks to address and please include information to illustrate your area of work is addressing an area of inequality e.g. what data do you have to support this work is a priority*)
  - **What is the impact you are hoping to achieve** (*what key performance indicators, metrics or outcomes will you use in your project*)
  - **How will you monitor progress**
  - **Funding** (*Total cost of the project, amount requested and where appropriate confirmed match funding already in place*)
  - **Project timeline / delivery plan**
- **A webinar will be held 9.30am – 1.30am, 1 November 2023** to provide further information about the funds, process for application and to answer any questions. **To book a place please email SOUTHANDWESTCOMMISSIONINGTEAM, NHS DEVON ICB** via [d-icb.southandwestcommissioningteam@nhs.net](mailto:d-icb.southandwestcommissioningteam@nhs.net) by 5pm, 30 October 2023.
  - **The deadline for submitting an application is 5pm, 10 November 2023.** Please submit your completed application to [d-icb.contracting@nhs.net](mailto:d-icb.contracting@nhs.net) and include in the title “South Population Health and Prevention Funding”. Any applications submitted without this title may be missed and may not progress to the assessment panel. Any applications submitted after the deadline will not be considered.
  - All applications will be assessed by a panel comprising members of The South Population Health Steering Group. This includes representation from NHS Devon, Torbay and South Devon NHS Foundation Trust, Public Health, Primary Care, Torbay Communities and Teignbridge CVS.
  - The panel will seek to review all applications within 2 weeks of the funds closing date.
  - In situations where the fund is oversubscribed and there is no-consensus on which projects can be progressed within the available financial envelope, projects will be discussed within the South Local Care Partnership to support final decision making.

## Timescales



## Monitoring

If you are successful in your application you are agreeing to enter in to an agreement with NHS Devon. This may take the form of a grant or contract.

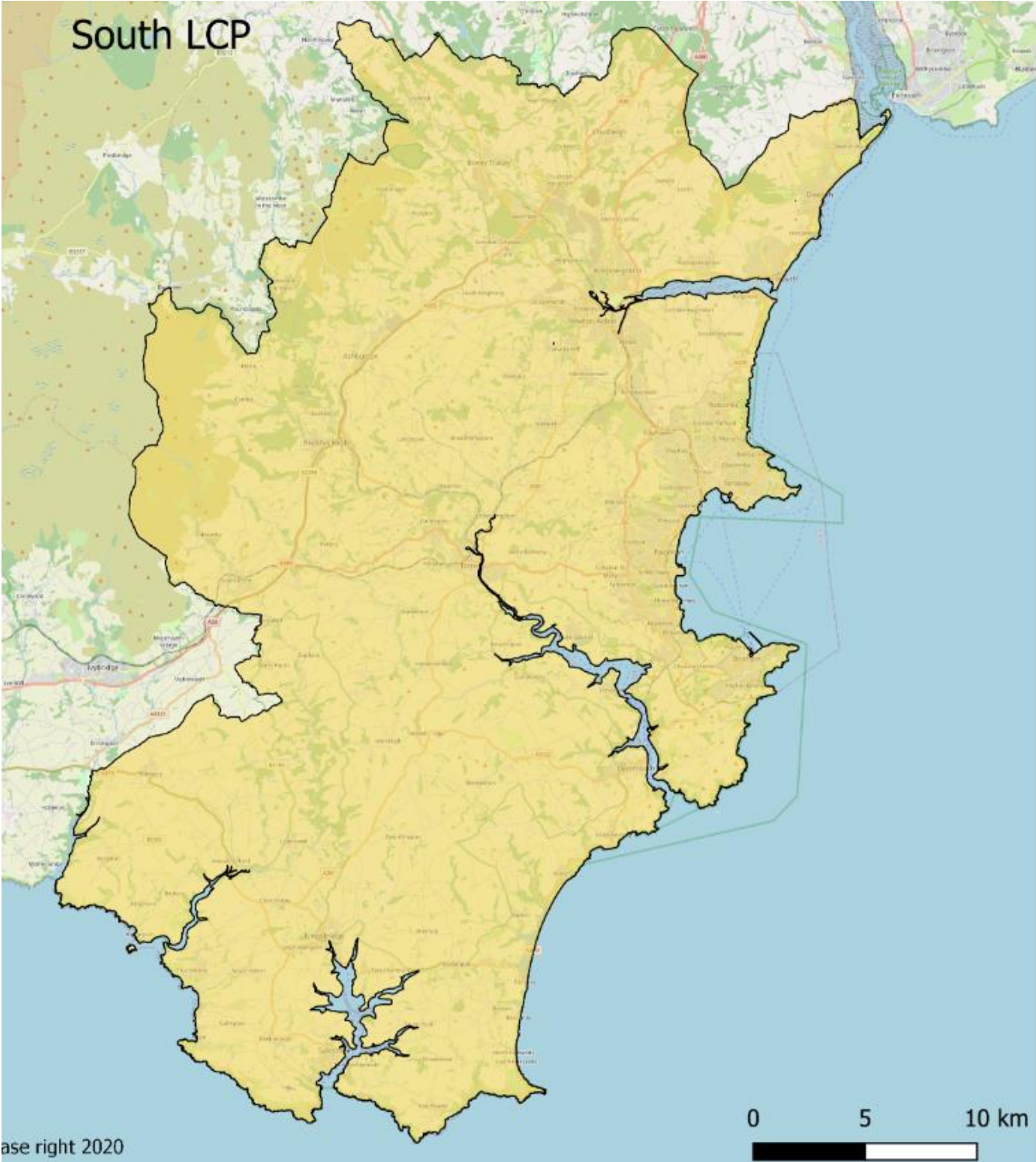
The South Population Health Steering Group is keen to understand the progress and impact your project is making. All projects funded will be asked to provide a short report every 3 months. A member(s) of the South Population Health steering group may also wish to meet with you following submission of reports to better understand your project and help share learning through to the South Local Care Partnership.

## Additional Information

- A webinar will be held 9.30am – 1.30am, 1 November 2023 to provide further information about the funds, process for application and to answer any questions. To book a place please email SOUTHANDWESTCOMMISSIONINGTEAM, NHS DEVON ICB via [d-icb.southandwestcommissioningteam@nhs.net](mailto:d-icb.southandwestcommissioningteam@nhs.net) by 30 October 2023
- For any queries, requests for the application template and to submit an application please email [d-icb.contracting@nhs.net](mailto:d-icb.contracting@nhs.net)
- To help manage email communications and ensure all potential applications are tracked please use the following headings in email communication:

- All emails which are asking questions, clarifications or querying the process, how to apply or want to speak about an application prior to submission should include in the subject header *“Query South Population Health and Prevention Fund and include the name of your group / organisation”* e.g. *Query South Population Health and Prevention Fund\_South and West Locality Team\_NHS Devon*
- All emails submitting an application should include the following subject header *“Submission South Population Health and Prevention Fund and include the name of your group / organisation”* e.g. *“Submission South Population Health and Prevention Fund\_South and West Locality Team\_NHS Devon”*
- There is no limit on the funds which can be applied for, however all funds must be claimed for by 31 March 2024. Project plans submitted with the application should show funding can be utilised within this timescale.
- It is hoped that further funding will be made available for the 2024/25 financial year. Details have not yet been confirmed, however once confirmed the aim will be to launch a similar process between January and March 2024 for delivery to commence 1 April 2024. Schemes funded through this process will be eligible to apply for continuation funding where project are starting to show a positive impact. Further information will be provided when available.

# South Local Care Partnership Footprint





## Glossary

Helpful link if you would like more information [NHS England » What are integrated care systems?](#)

**Local Care Partnership (LCP)** – are collaborations between a wide range of organisations and groups who help people live happier and healthier lives in their geographical footprint.

**Population Health** – An approach that aims to improve the health of an entire population (geographical or across themes) rather than the health of one person at a time. It is about improving the physical and mental health and wellbeing of that population and in doing so reducing avoidable and health inequalities of that population.

**Population Health Management (PHM)** – is an approach that uses historical and current data to understand what factors are driving poor outcomes in different population groups. Local health and care services can then design new pro-active models of care which will improve health and wellbeing today as well as in the future.

**Primary Care Networks (PCN)** – Is a group of GP practices working closing together, aligned to other health and social care staff and organisations, providing integrated services to their local population.

**Integrated Care Partnership (ICP)** – A partnership with statutory responsibilities that brings together health and care organisations to design and delivery services to meet the needs of everyone they serve based on their population. Partners keep their own budgets but agree on how those are spent for the benefit of the local communities

**Integrated Care Board (ICB)** - A statutory NHS organisation responsible for developing a plan for meeting the health needs of the population, managing the NHS budget and arranging for the provision of health services in the ICS area.

**Local authorities (LA)** - Local authorities in the ICS area, which are responsible for social care and public health functions as well as other vital services for local people and businesses.

**Joint Forward Plan** outlines how the ICB, working with our partners across health and care, will deliver health and care services to people living in Devon.

**Community Voluntary Services (CVS)** - Organisations dedicated to helping individuals , not-for-profit groups and community enterprises

**National Health Service (NHS)** – Publicly funded health care system